



## 2 Outlet Tap TIMER

### Important, please read!

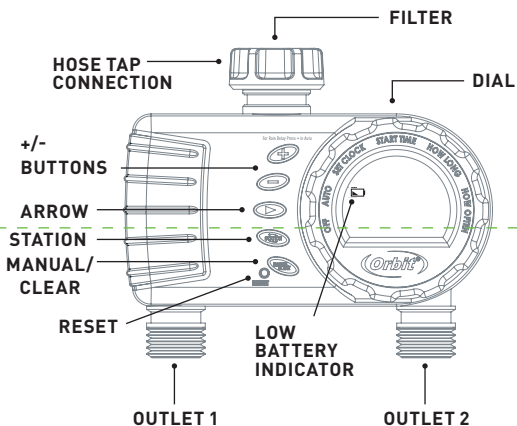


When expecting freezing temperatures, timers should be removed from the tap and stored indoors to avoid potential freeze damage.



Filter traps dirt particles, prolonging life of timer. Clean filter regularly and replace if worn.

### TIMER FEATURES



**DIAL**—Rotate the dial to customize your watering schedule.

**+/- Buttons**—Use these buttons to adjust time and program. While in AUTO press + to activate Rain Delay.

**ARROW**—Moves cursor around the screen during programming.

**STATION**—Moves between Station 1 and Station 2.

**MANUAL/CLEAR**—Press to water manually or to clear programming.

**RESET**—Press to reset back to factory settings.



**AUTO**—Timer waters according to your customized schedule.

**SET CLOCK**—Set the time of day.

**START TIME**—Select what time you would like to start watering.

**HOW LONG**—Determine how long to water

**HOW OFTEN**—Choose how often you will water

**OFF**—Turn off all watering.

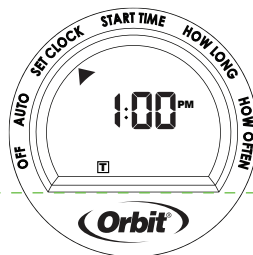
### INSTALLING THE BATTERIES

1. Remove the tray on the back of the timer by sliding or pulling it out.
2. Insert two AA (1.5V) alkaline batteries (not included) and replace the tray.

**Note:** Firmly replace the battery tray to ensure water resistance and increase battery life. You will know the battery tray is fully inserted if it does not pull out easily. Used up or dead batteries must be removed from the timer and disposed of properly. Replace batteries when low battery icon appears on display. Do not dispose of batteries in fire. Batteries may explode or leak.

### PROGRAMMING THE TIMER

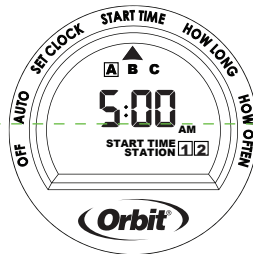
#### Set Clock and Day



1. Turn dial to SET CLOCK.
2. Using the +/- buttons, set the time of day, including AM and PM. Timer advances faster if button is held down.
3. Press the ARROW button to set current day.
4. Press the +/- buttons to move between and select the current day of the week. Press the ARROW button to toggle back to the time of day.
5. Turn dial to save changes

#### Start Time

A start time is the time of day that the timer will begin to water. This timer features three start times.



1. Turn dial to START TIME.
2. Press the ARROW button to move through and select a start time; A, B, and/or C.

3. Using the +/- buttons, set your first start time, including AM and PM. Timer advances faster if button is held down. A box is placed around each programmed start time.

**Note:** To remove a start time press CLEAR.

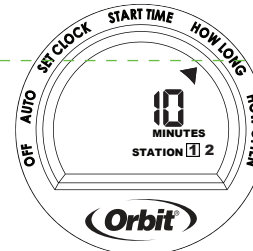
4. Press the STATION button to move through stations; 1 or 2.
5. Press the +/- buttons to toggle the stations on/off.

**Note:** All stations are automatically selected when a start time is added. Press the - button to toggle a station off.

6. Repeat steps 2 - 5 to program additional start times.
7. Turn dial to save changes.

**Note:** Only one start time is required.

#### How Long

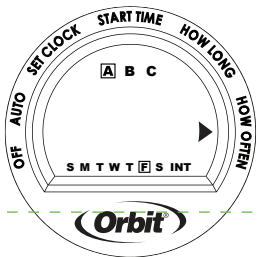


1. Turn dial to HOW LONG.
2. Press the STATION button to move through and select a station; 1 or 2.
3. Using the +/- buttons, select watering duration from 1 to 360 minutes for each desired station. Timer advances faster if button is held down.

**Note:** To remove a watering duration press CLEAR.

4. Turn dial to save changes.

## How Often



1. Turn dial to HOW OFTEN.
2. Press the ARROW button to move through and select a start time A, B, and/or C.
3. Press + or - button to move the cursor down to select Days of the Week or Interval watering frequency.
4. There are two ways to set your watering frequency for each start time; Days of the Week or Interval.

### Days of the week - Select specific days you want to water:

- Using the ARROW button move to the desired day.
- Press the + / - buttons to toggle the day of the week on/off.
- Select any combination of days.

### Interval - Select an interval period you want to water:

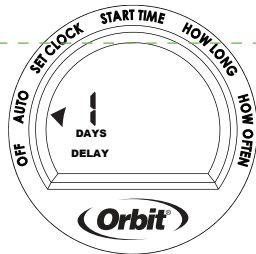
- Using the ARROW button move to INT.
  - Press the + / - buttons to cycle through each interval. You may choose to interval water every 1 hour, 2 hours, 4 hours, 6 hours, 12 hours, or 1 to 7 days.
5. Repeat steps 2 and 4 to program watering frequency for additional start times.
  6. Turn dial to save changes.

## Congratulations!

Your timer is now programmed. Turn your dial to AUTO to allow your timer to water according to programmed time, station, duration, and frequency.

## ADDITIONAL FEATURES

### Rain Delay



Rain delay allows you to postpone watering for a set period of time. To access the rain delay, follow the steps below.

1. With the dial on AUTO, press the + button to select a delay of 1 to 7 days.
2. Screen will flash between clock and hours remaining before programmed cycle resumes.
3. To remove rain delay, turn dial to OFF and then back to AUTO.

### Manual/Hand Watering



This feature allows you to water without interrupting your set schedule. To access this feature, follow the steps below.

1. There are two ways to water: all stations as programmed or selected stations.

### To water all stations as programmed:

- With the dial on AUTO, press the MANUAL button.
- "ALL" will be displayed and the timer will water all stations as programmed.

### To water specific stations or durations:

- With the dial on AUTO, press the MANUAL button.
- Press the STATION button to select desired station.
- Using the +/- buttons, select watering duration from 1 to 360 minutes.

**Note:** There may be a slight delay between the time the manual button is pressed and when watering begins.

2. Screen will flash between clock and time remaining before automatic programming resumes.
3. To stop manual watering, turn the dial to OFF.
4. Turn the dial back to AUTO to resume your programmed watering schedule.

## TROUBLESHOOTING

Water does not come on at desired time.

Check if:

- Clock is set to correct time, including AM and PM.
- Dial is set to "Auto"
- Start time is set to desired time, including AM and PM.
- Rain Delay is on.

Timer does not water.

Check if:

- Timer is set to AUTO.
- Tap is on.
- Batteries are low.
- Clock is set to correct time, including AM and PM.
- Rain Delay is on.

Water won't turn off.

Check if:

- HOW LONG is set to desired time.
- HOW OFTEN is set to desired interval hour or day.

## WARNINGS:

For cold water outdoor irrigation use only. Not for use on appliances.

Working water pressure:

- Minimum: 68 kPa (0,68 bar)
- Maximum: 689 kPa (6,89 bar)

Working temperature:

- Maximum: Do not exceed 49°C
- Minimum: Keep from freezing



Orbit® Irrigation Products, Inc.  
North Salt Lake, UT 84054 USA

© 2017 Orbit Irrigation Products, Inc.  
All rights reserved. All trade names are registered trademarks of respective manufacturers listed.

PN 96782-24 rC